

# READER’S GUIDE AND DOCUMENTS RELATING TO THE ANNUAL FINANCIAL PLAN

The purpose of this document is to provide useful, concise information about Fluvanna County financial plans and operations to residents, elected officials, and interested parties. The budget is organized along functional lines and includes a narrative discussion of each department’s major objectives and any significant changes in operations. Each narrative also provides a breakdown of expenditures including the number of full-time and part-time positions in each department. A column graph is included with each department’s narrative to provide a visual representation of the department’s progress over the past five years.

## ISSUES OF MAJOR INTEREST

Organizational Chart..... ix

Capital Improvement Plan .....Appendix A

School Fund .....p. 104

For a complete listing of budget topics, please refer to the Table of Contents.

## DOCUMENTS RELATING TO THE ANNUAL OPERATING BUDGET

In addition to the Annual Operating Budget, the County prepares several other documents that relate to county operations and finances. These include:

**Monthly Financial Report** – This document details the county’s monthly revenue and expenditure activity. It shows each department’s monthly expenditures in relation to the adopted budget as well as the revenue collection trends for the county.

**Comprehensive Annual Financial Report** – This document presents the County’s financial statements at June 30 of each year. This report is generated in accordance with the Governmental Accounting Standards Board (GASB), Financial Accounting Standards Board (FASB), and the Auditor of Public Accounts of the Commonwealth of Virginia standards. This report is subject to an annual audit by an independent accounting firm.

**Comprehensive Plan** – The Comprehensive Plan provides findings and analyses for the County as a whole with respect to: natural conditions, population and demographics, economy, housing, transportation, utilities, and community facilities and services. It is the purpose of the plan to provide a sound basis for the preparation of detailed functional plans which will serve as a general guide in the day-to-day decisions of County government.

# FLUVANNA COUNTY, VIRGINIA

## INTRODUCTION

### History

The area which is now Fluvanna County was once part of Henrico County, one of the original shires of the Virginia Colony. Henrico was divided in 1727 and the Fluvanna County area became a part of Goochland County. In 1744 Goochland was divided and the area presently known as Fluvanna became a part of Albemarle County. Fluvanna County was formed from



Albemarle County in 1777 during the American Revolution. The official seal of Fluvanna County incorporates the Revolutionary War Arsenal at Point of Fork, and a branch of persimmons at the top of the interior crest. Persimmons were once an integral part of Fluvanna pride. The county seal is the centerpiece of the county flag.

### Government

In Virginia, cities, counties and towns are distinct units of government and do not overlap. The County of Fluvanna is made up of five districts, Cunningham, Columbia, Fork Union, Palmyra and Rivanna. Each of the districts are represented by an individual member of the Board of Supervisors, with the Rivanna district having 2 representatives due to its dense population.

### Population

Fluvanna County has an estimated population of 24,900 and according to the U.S. Census Bureau's 2005 report is listed as the seventh fastest growing county in the State of Virginia.

### **POPULATION AND RATES OF CHANGE (Actual and Estimates)**

| <u>Year</u> | <u>Population</u> | <u>Rate of Change</u> |
|-------------|-------------------|-----------------------|
| 1980        | 10,244            | n/a                   |
| 1990        | 12,429            | 21.3%                 |
| 2000        | 20,047            | 61.3%                 |
| 2001        | 20,998            | 4.7%                  |
| 2002        | 22,008            | 4.8%                  |
| 2003        | 22,954            | 4.3%                  |
| 2004        | 23,644            | 3%                    |
| 2005        | 24,900            | 5.3%                  |

Source: U.S. Census Bureau, Decennial Census, 1900-1990, U.S. Census Bureau, 2000 Census, U.S. Census Bureau Population Estimates for 2001 through 2005

## Demographics

Fluvanna County is centrally located in the heart of Virginia and is characterized by gently rolling hills. Covering 282 square miles, two-thirds of the county's land is forested, with most open land devoted to farming and grazing. Elevations above sea level range from around 200 feet at the Town of Columbia to about 550 feet at Zion Crossroads. The County is approximately 25 miles east of Charlottesville, 60 miles west of Richmond and 120 miles south of Washington, DC. Fluvanna experiences moderate climates throughout the year with the average temperature in January at 37.5° and 77.9° in July. The typical annual rainfall is 42.6 inches with annual snowfall around 14.4 inches.

## Economy

Forestry and agriculture are the backbone of Fluvanna's economy. Most recently noticeable is the growing retail and service business sector that is emerging. Commercial activity within the county is centered around Fork Union, Lake Monticello, Palmyra and Zion Crossroads. Fluvanna County is one of the few counties in Virginia that does not levy a BPOL, or tax on business gross receipts. The Fluvanna County Industrial Development Authority is authorized to issue tax-exempt revenue bonds. The Chamber of Commerce, the Industrial Development Authority, and the Economic Development Commission are very active in the support of business and industry.

## Employment

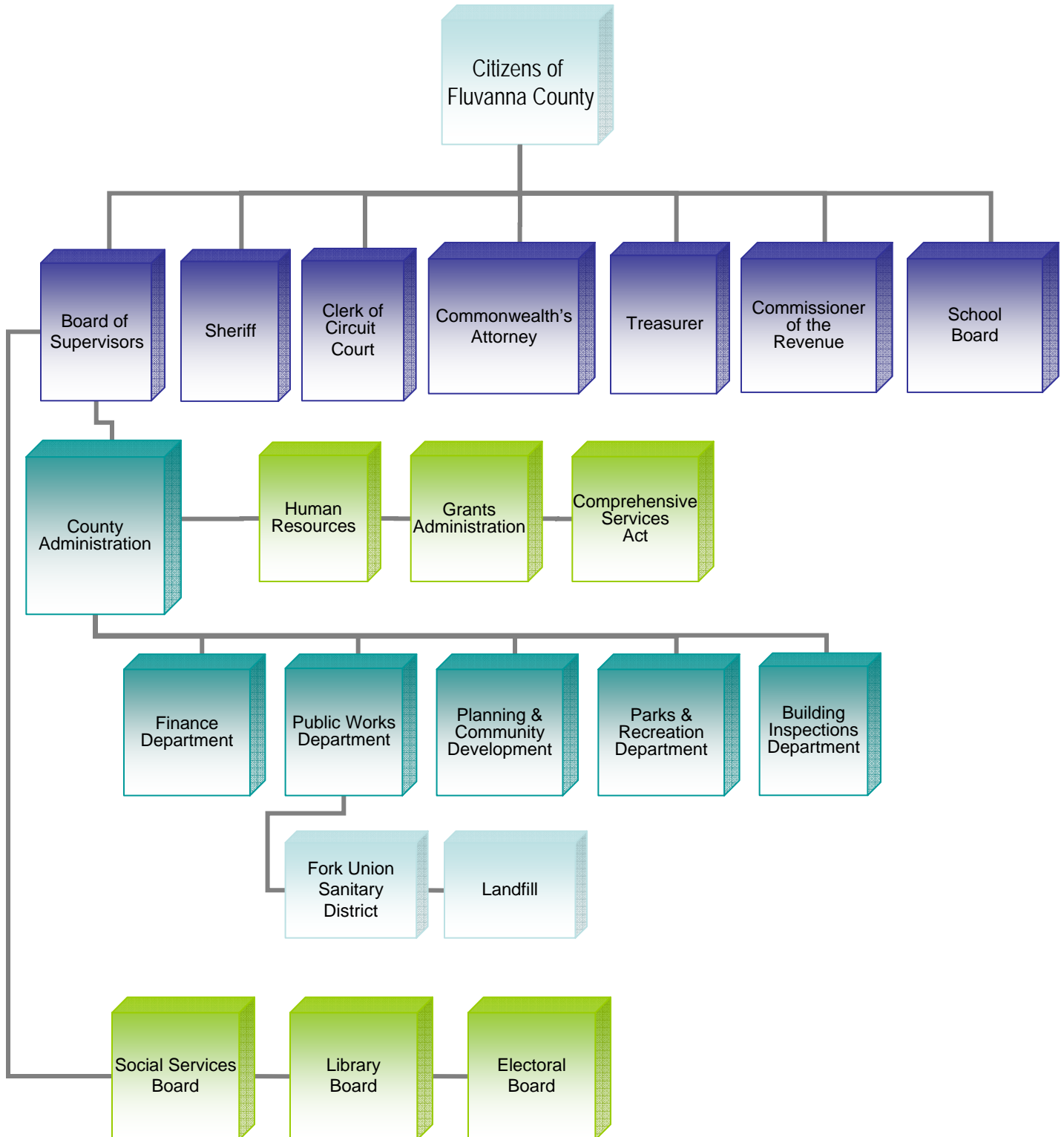
Fluvanna's top employers include Fluvanna County School System, County of Fluvanna, Camp Friendship, Chips, Inc., Advanced Concrete Foundations, Food Lion, G&P Forestry Svc., and Backhoe Bob's Inc..

Table of Labor Force and Unemployment for Fluvanna County

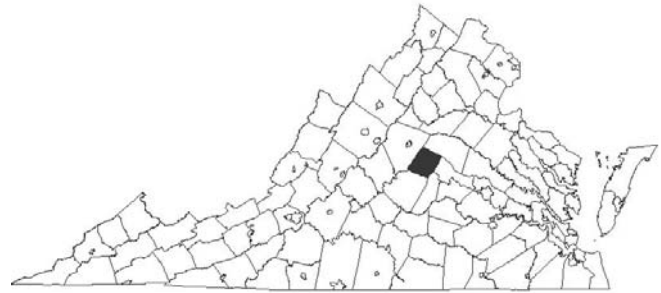
| <i>June</i> | <i>Civilian<br/>Labor Force</i> | <i>Employment</i> | <i>Unemployment</i> | <i>Unemployment<br/>Rate (%)</i> |
|-------------|---------------------------------|-------------------|---------------------|----------------------------------|
| 2006        |                                 |                   |                     |                                  |
| 2005        | 12,984                          | 12,521            | 463                 | 3.6                              |
| 2004        | 11,969                          | 11,592            | 377                 | 3.1                              |
| 2003        | 11,731                          | 11,330            | 401                 | 3.4                              |
| 2002        | 11,429                          | 11,050            | 379                 | 3.3                              |
| 2001        | 10,741                          | 10,461            | 280                 | 2.6                              |
| 2000        | 10,104                          | 9,890             | 214                 | 2.1                              |
| 1999        | 9,718                           | 9,604             | 114                 | 1.2                              |
| 1998        | 9,598                           | 9,451             | 147                 | 1.5                              |
| 1997        | 8,800                           | 8,578             | 222                 | 2.5                              |

Source: LAUS Unit and Bureau of Labor Statistics through  
Virginia Employment Commission: Virginia's Electronic Labor Market Access

# Fluvanna County Organizational Chart



# FLUVANNA COUNTY



COUNTY LOCATION

